

# Savile Row Public Realm Improvement Scheme

**DECEMBER 2017: NOTIFICATION FOR LOCAL RESIDENTS AND BUSINESSES**

**Programme dates:** End of January 2018 to end of July 2018

## Project Overview

- Improve the quality of the Public Realm along Savile Row and Clifford Street using the best quality materials and detailing to create an area that is a suitable setting for the home of craft tailoring.
- Safer and improved environment for pedestrians by increasing available footway space and reducing crossing distances at new raised crossing points.
- Reduce the impact of parked vehicles through improved management measures, such as reduced maximum stays and restricted timing for loading
- Visually reduce the width of the carriageway through the use of granite parking pads level with the footway
- Improved lighting along Savile Row and Clifford Street
- Complete resurfacing of the carriageway within the scheme

## Programme of works

Works will begin in early 2018.

A letter drop 10 days prior to the commencement of works will be undertaken.

Normal working hours are 8am-5pm Monday to Friday, and 9am to 1pm on Saturdays. Residents and businesses will be notified accordingly for any work outside of normal working hours.

Please note that some road closures will be required, but will be kept as short as possible to minimise disruption to residents and businesses. More details about the programme of works will be advertised closer to the start of the works.

**Please see reverse for the proposed scheme layout drawing.**

**Pedestrian access to all properties will be maintained at all times.**

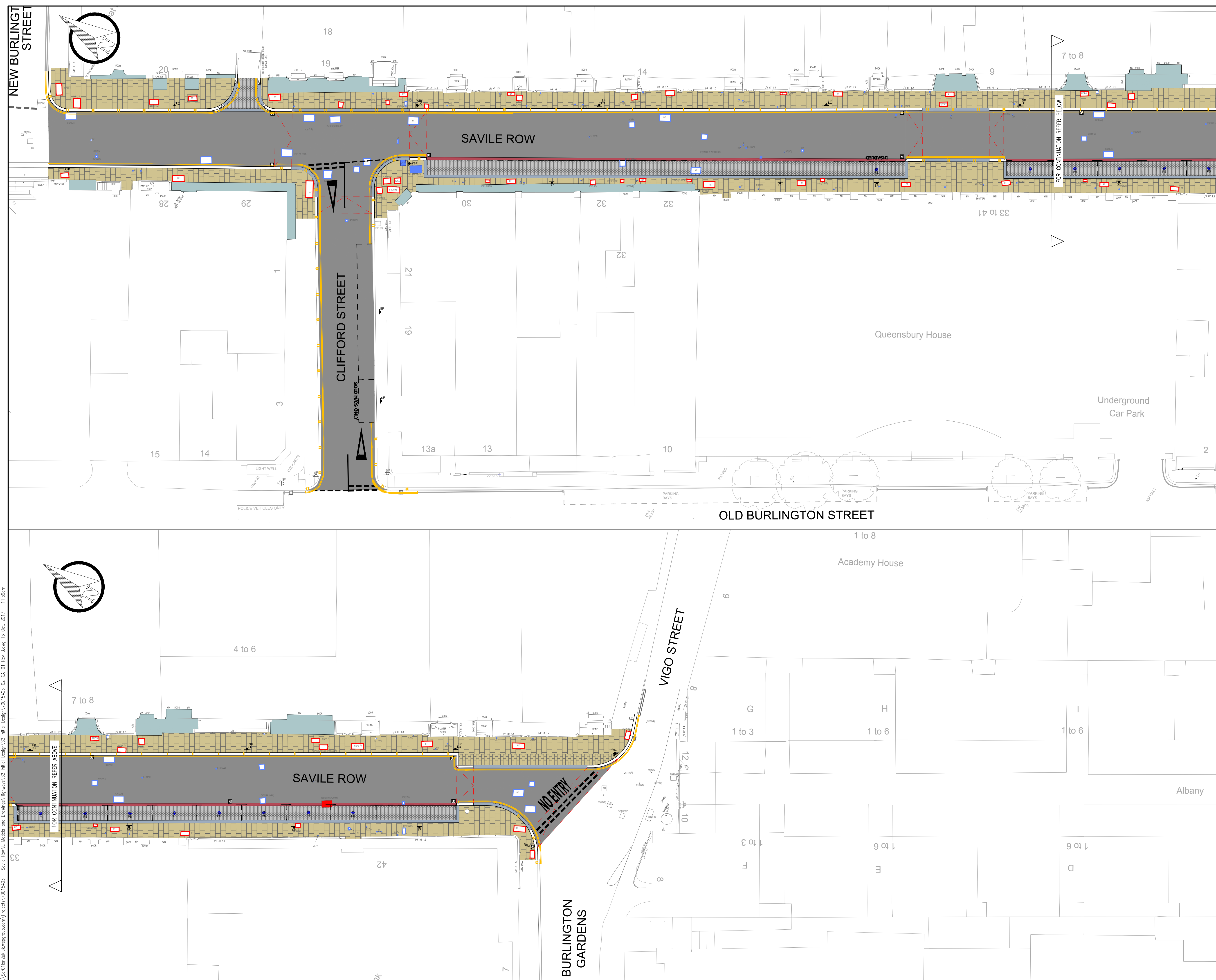
## What happens next?

**Basement Condition Surveys** are currently being undertaken to ensure the current state of basements are recorded.

### CONTACT US

If you have any queries about the scheme please call Westminster City Council on 020 7641 6000 or write to: Mark Allan, City of Westminster City Management & Communities, 4<sup>th</sup> Floor, City Hall, 64 Victoria Street, London, SW1E 6QP





**KEY:**

PROPOSED 750x600x75mm 'APPLETON' YORKSTONE PAVERS LAID ON 50mm THICK STEINTEC 'TUFFBED' 2 PACK BEDDING MORTAR WITH STEINTEC 'TUFFBOND' PRIMING MORTAR, AND STEINTEC 'TUFFTOP' GROUTING MORTAR TO BS 7533, ON 150mm THICK C16/20 CONCRETE

PROPOSED 250x150x100mm THICK 'MID GREY' GRANITE SETTS MACHINED 5 SIDES, FINE PICKED TOP LAID ON 50mm THICK STEINTEC 'TUFFBED' 2 PACK BEDDING MORTAR WITH STEINTEC 'TUFFBOND' PRIMING MORTAR, AND STEINTEC 'TUFFTOP' GROUTING MORTAR TO BS 7533, ON 200mm THICK (CBGM) B C16/20 TO BS EN 14227-1:2013, CONCRETE

PROPOSED 300x200x180mm 'APPLETON' YORKSTONE SETTS LAID ON: 50mm THICK STEINTEC 'TUFFBED' 2 PACK BEDDING MORTAR WITH STEINTEC 'TUFFBOND' PRIMING MORTAR, AND STEINTEC 'TUFFTOP' GROUTING MORTAR TO BS 7533, ON 200mm THICK (CBGM) B C16/20 TO BS EN 14227-1:2013, CONCRETE.

PROPOSED 50mm CARRIAGEWAY SURFACE HRA 35/14 F SURF 40/60 PMB + WTR2 WITH 14/20 PRE-COATED CHIPPING SURFACE COURSE ON 50mm (MIN) BINDER COURSE HRA 50/14 bin 40/60 PMB WTR2.

PROPOSED 300x200mm TARVOS GRANITE KERB ON 150mm C16/20 WET LEAN CONCRETE

PROPOSED 300x200mm FLUSH TARVOS GRANITE KERB WITH DROPPER LAID ON 150mm C16/20 WET LEAN CONCRETE WITH 6mm UPSTAND (MAX)

PROPOSED 300mm WIDE TARVOS GRANITE CHAMFERED KERB LAID FLAT ON 150mm C16/20 WET LEAN CONCRETE, CHAMFER HEIGHT AND WIDTH TO BE CONFIRMED

PROPOSED PRIMROSE YELLOW LINE MARKINGS

PROPOSED WHITE LINE MARKING

PROPOSED NEW GULLY. INSTALL HEAVY DUTY FRAME AND CYCLE FRIENDLY GULLY GRATE.

EXISTING GULLY

EXISTING SERVICE COVER TO BE RELOCATED

EXISTING SERVICE COVER TO BE FITTED WITH RECESSED COVER

EXISTING SERVICE COVER TO BE RAISED / LOWERED TO SUIT

EXISTING SERVICE COVER CHAMBER TO BE REBUILT AS FOOTWAY SPEC AND COVER TO BE RECESSED.

PROPOSED PARKING SENSOR

PROPOSED POST BOX

EXISTING LIGHTING COLUMN. LIGHTING HEAD TO BE REPLACED.

PROPOSED SIGN AND POST

PROPOSED SIGN ON WIDE BASE POST

EXISTING SIGN ON WIDE BASE POST

EXISTING LAMP COLUMN

EXISTING BOLLARD

C	13.10.2017	JR	REMOVING FLUSH KERB		
B	09.10.2017	JCH	PARKING RELOCATION	JN	CDS
A	25.09.2017	JCH	INITIAL ISSUE	JN	CDS
REV	DATE	BY	DESCRIPTION	CHK	APD

DRAWING STATUS

**INITIAL DESIGN**

25 Mandela Way, London, SE1 5SZ  
www.fmconway.co.uk www.wsp.com

CLIENT

City of Westminster

PROJECT

**SAVILE ROW  
PUBLIC REALM IMPROVEMENTS**

TITLE

**GENERAL ARRANGEMENT**

SCALE @ A1	DATE	DESIGNOR/RAWN	CHECKED	APPROVED	SHEET
1:200	25.09.2017	JCH	JN	CDS	A1
JOB No.	FWC PROJECT No.	BRIEF/DSB No.			
700015403	WWESA1573	BR23024			
DRAWING No.					REV.
70015403-02-GA-01					C