

Selfridges Duke Street Public Highway Improvements

Phase 1

Westminster City Council in partnership with Selfridges are improving the public highway on Duke Street at the junction with Edwards Mews

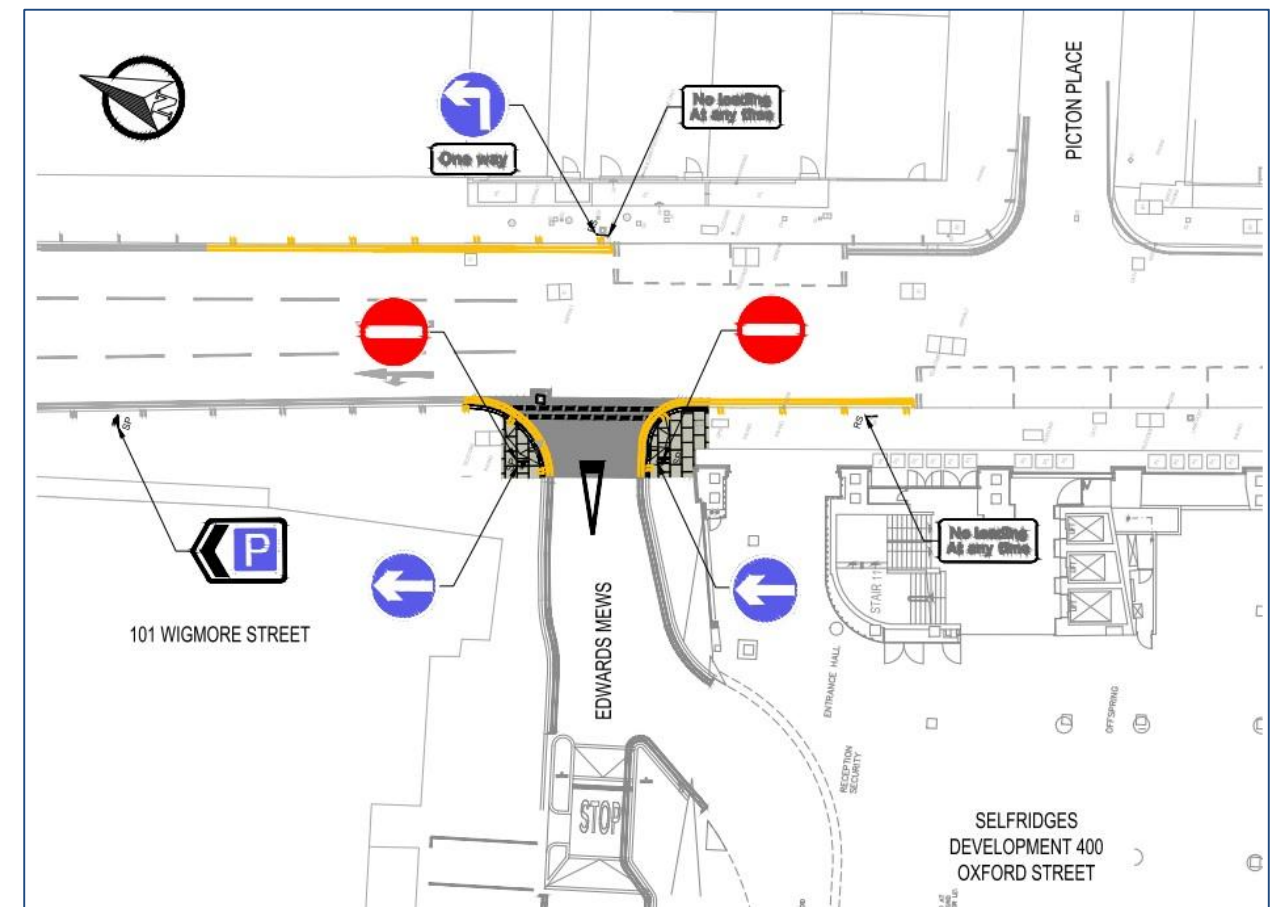
Creating a cleaner, safer and brighter environment for all users

Programme work dates: 09 November 2015 – 27 November 2015

Phase 1 Improvements include:

- Reconfigured junction of Edwards Mews and Duke Street
- Repaving footways with new concrete paving and granite kerbs
- Resurfacing of the vehicular entrance
- Improved drainage

Programme works dates for all other phases to be advised once agreed.



We apologise in advance for any inconvenience that may be caused and we will endeavour to keep disruptions to a minimum. If you require any further information on this project please scan the QR Code. Thank you for your patience and understanding.

For information about the works
On-site, please contact:
Andrew Permain, Operational Manager, on
020 8900 0221 or e-mail
andrew.permain@careysplc.co.uk

For general information, please contact:
Peter Bennett, Projects and Programme
Manager on
020 7641 2920 or e-mail
pbennet@westminster.gov.uk

90% of materials from this site are to be recycled or re-used

www.westminster.gov.uk/transportandstreets



City of Westminster